

Notes on how to read the Wiring Tables and the DC Schematic

Wiring Tables

Provided by the efforts of Guyfang and myself. Guyfang Thank you for your help!

The wiring is provided in two tables.

The tables do not list the full wire label. The actual wire number stenciled on each wire have a 2 digit suffix indicating the wire gauge. That wire gauge suffix is not listed in the wiring tables.

A) Wire to Component Table

1. This table lists all the wires in the 802/803 gensets in order by wire number.
2. Almost all wires have two entries in the table such as wire 001A lists TB3-1 to S8-L1 and S8-L1 to TB3-1. They are the same wire.

For example...

001A	TB3-1	S8-L1
001A	S8-L1	TB3-1

3. The DC wiring in the 802 and 803 is the same except for the intake manifold heater wiring. The 802 only has two heaters whereas the 803 has 4 heaters.

B) Component to Component Table

1. This table lists all the wires in the 802/803 gensets in order by the “source” of the wire.
2. Almost all wires have two entries in the table such as wire 156A lists A1-1 to R1-L and R1-L1 to A1-1 in different locations in the table. They are the same wire.

For example...

Wire Comes From	Wire Goes To	Wire Number
A1-1	R1-L	156A

Later in the table...

R1-L	A1-1	156A
------	------	------

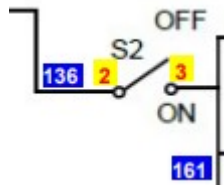
C) DC Schematic

The base DC schematic was put together by S.S. contributor DieselAddict. Thank you Chris! That schematic has been marked up with some additional information to aid in troubleshooting.

1. A couple of schematic errors spotted on the version I marked up are pointed out with corrective notes.
2. White Text in Blue boxes indicate the base wire number for that wiring connection.

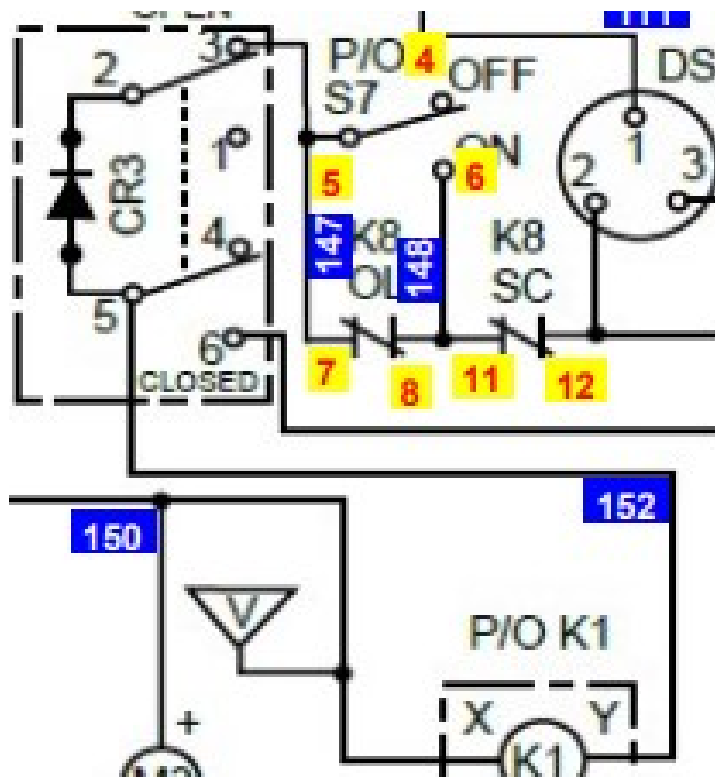
For example **152** indicate wire(s) 152

3. Red text in Yellow boxes generally indicate the terminal number on the various devices in the DC control system.



For example **136** shows base number wire 136 is connected to S2-2 and base wire number 161 is connected to S2-3.

4. A connection in the schematic is typically comprised of several wires.
 For example connection 152 running from K1-Y to S5-5 is comprised of 3 wires.
 Wire 152B runs from S5-5 to TB5-16
 Wire 152C runs from TB5-16 to connector J6 pin 35
 Wire 152D runs from connector P6 pin 35 to K1-Y



The section of the wiring table for those 3 wires. (Each wire is listed twice)

152B	TB5-16	S5-5
152B	S5-5	TB5-16
152C	TB5-16	J6-35
152C	J6-35	TB5-16
152D	P6-35	K1-Y
152D	K1-Y	P6-35

Contributor: Kurt Klopp (kloppk)